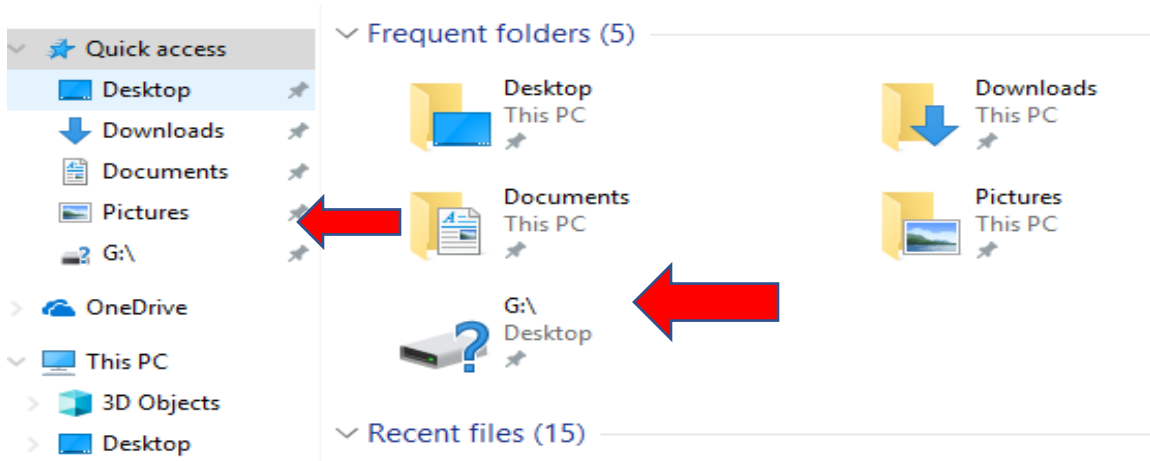


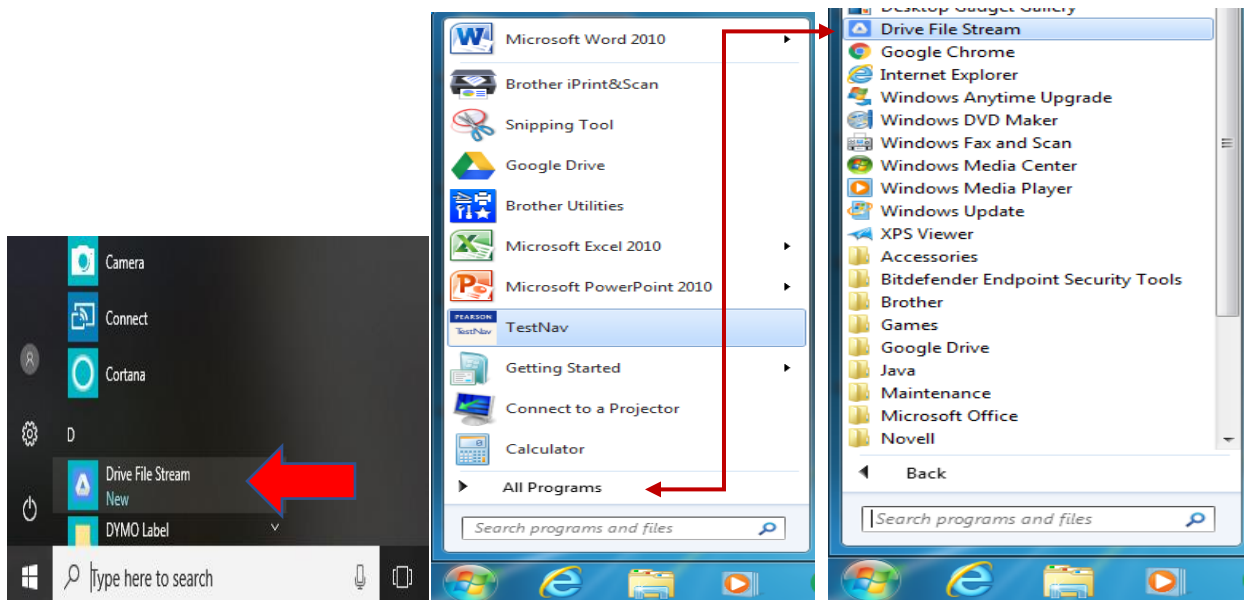
How to reconnect your “missing” google drive

- 1) If your google drive has a ? like this, it means that you are not logged in:



(The ? on google drive will be on both WIN 10 and WIN 7)

- 2) Go to your start menu (click the windows icon in the bottom left corner), select Drive File Stream:



(Win 10)

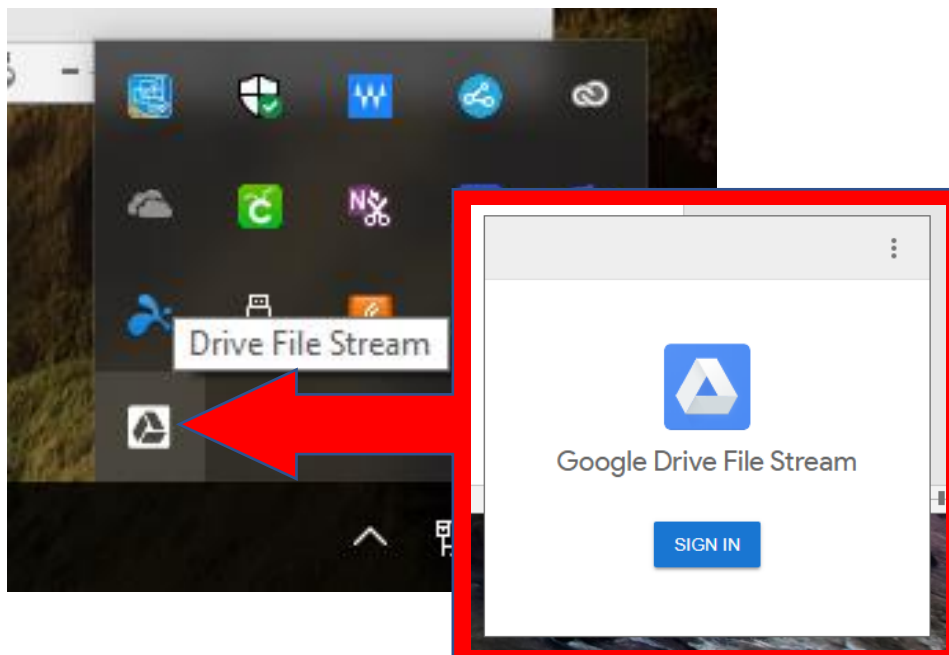
(WIN 7- Click “All Programs” to get to this list)

- 3) You should see this in the bottom right corner of your computer screen ([sometimes it will show up here](#)):



(This area will be very similar for both WIN 7 and WIN 10)

- 4) Click on the Drive File Stream icon and it should automatically log you in or ask for you to sign back in.



(This will be pretty similar for both WIN 7 and WIN 10)

5) You should have your Drive File Stream back at this point (No more ? on your google drive).

